

POWDERJET 85

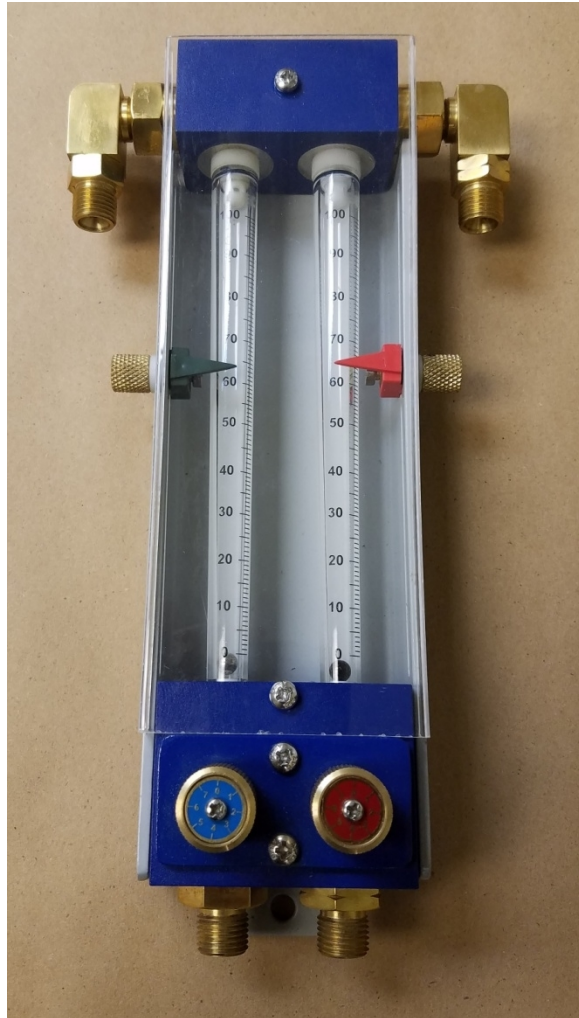
5PII Equivalent Combustion Powder Spray Gun

The Plasma Powders **PowderJet 85** powder metalizing gun system components:

PPS 2GF Gas Flowmeter:

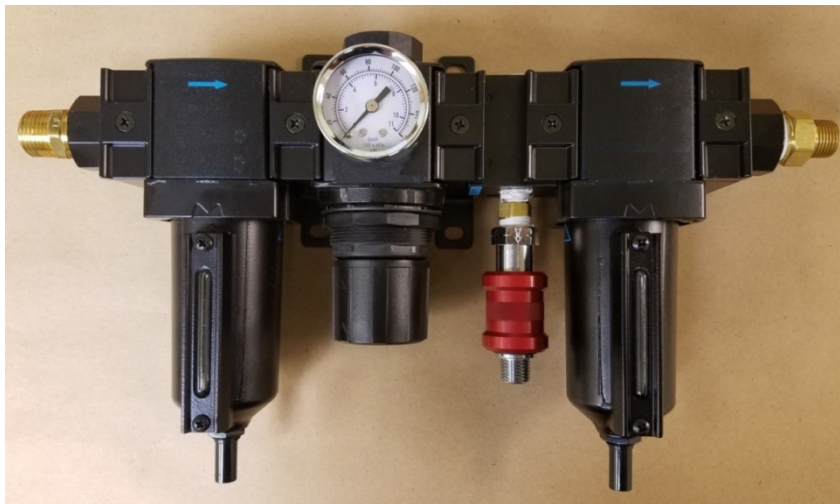
The 2GF allows the operator to easily monitor and maintain gas flows. Proper flows are crucial in order to heat and atomize powder material and help prevent overheating the equipment.

When adjusted to values found in the Powder Jet spray tables, users will achieve maximum bond strength, optimal coating quality and waste control.



PPS AT-100-3/8 Air Trio:

Compressed air is fed into the air trio where it is filtered, then regulated to the required pressure. Air is then cleaned and dried again in the second filter, then on to the torch. A secondary output slide valve can be used for aux. air needs like the 2PSA air jet or for part cleaning.



PPS PowderJet Extensions:

All of the combustion powder guns offered by Plasma Powders can be equipped with spray extension nozzles. The extensions come in 1 or 2 foot lengths, can be fitted with 80 or 45° angular gas heads. Typical uses are internal diameter or hard to reach coating surfaces.

Installation is simple by removing the standard Air Cap Body and Siphon plug and replacing with the extension. This can be done in about 1 - 2 minutes without tools.



PPS 2PSA Air Jet:

The PPS-2PSA Air Jet connects directly to the PowderJet 85 Air Cap Body. Thumb screws provide for easy, pin-point adjustment, of the Air Jets. The unit connects to the PPS-AT-100 Air Trio using only an additional air hose and can be used with or without the standard cooling air option in the torch.

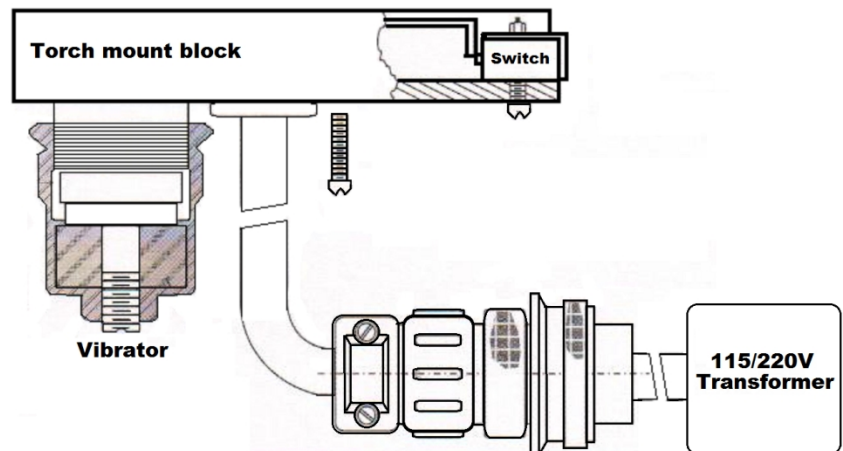
PPS-2PSA is recommended when denser, harder coatings are desired or part cooling is required.



PPS 5PV Vibrator:

PPS-5PV Vibrator assembly connects under the handle to the bottom of the PowderJet 85 torch. The unit is used with fine powders like ceramics to provide better, more even powder flows.

A 110 or 220 Volt Transformer is required.



PPS PowderJet 85 Torch:



The lightweight and durable PowderJet 85 combustion powder torch can be used hand-held or machine mounted. This unit sprays pure, alloyed or ceramic powders.

PowderJet 85 incorporates a top mounted, gravity feed hopper. Multiple powder metering valves and fine spray rate settings provide the ability to use a wide range of materials to suit most powder applications. One-step, bond coats, ceramics and spray and fuse powders are all possible with this versatile torch.

Powered by Oxy/Acetylene, the entire system (except if using vibrator or air jets, which require electricity or a compressor), can easily be mounted on a burning cart for mobile applications and field repair work.

See it on youtube: [PowderJet 85](#)

System flow diagram:



Plasma Powders & Systems, Inc.
PowderJet 85
Connection Diagram

