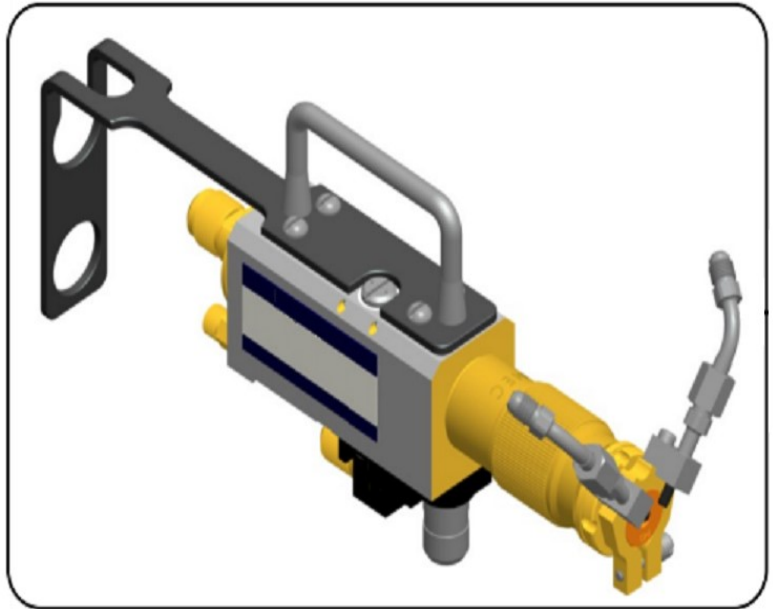




3MB Type



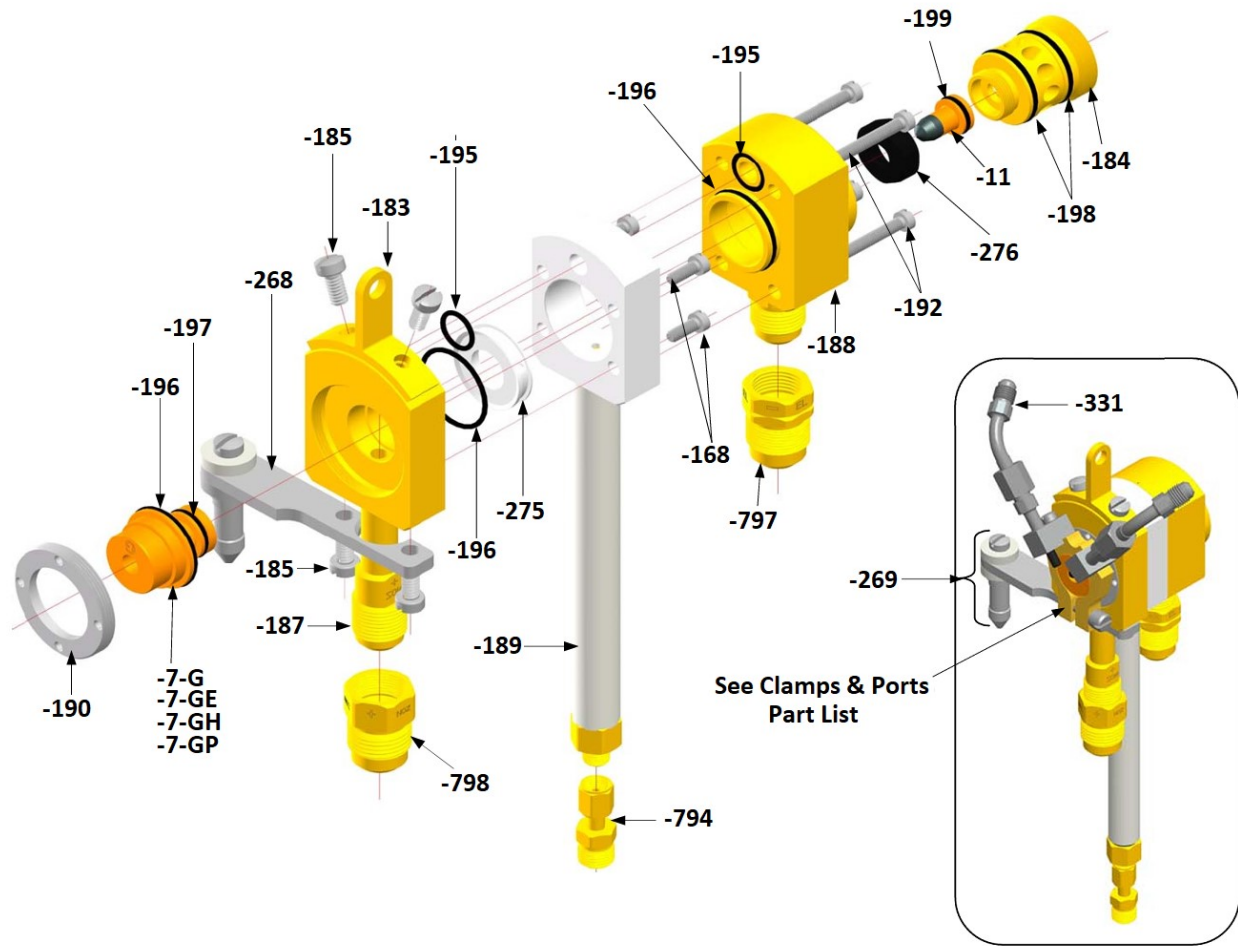
9MB Type

Plasma Guns

Section 1: 3MB Part List - Diagram

3MB Spares

Prefix PGP3-



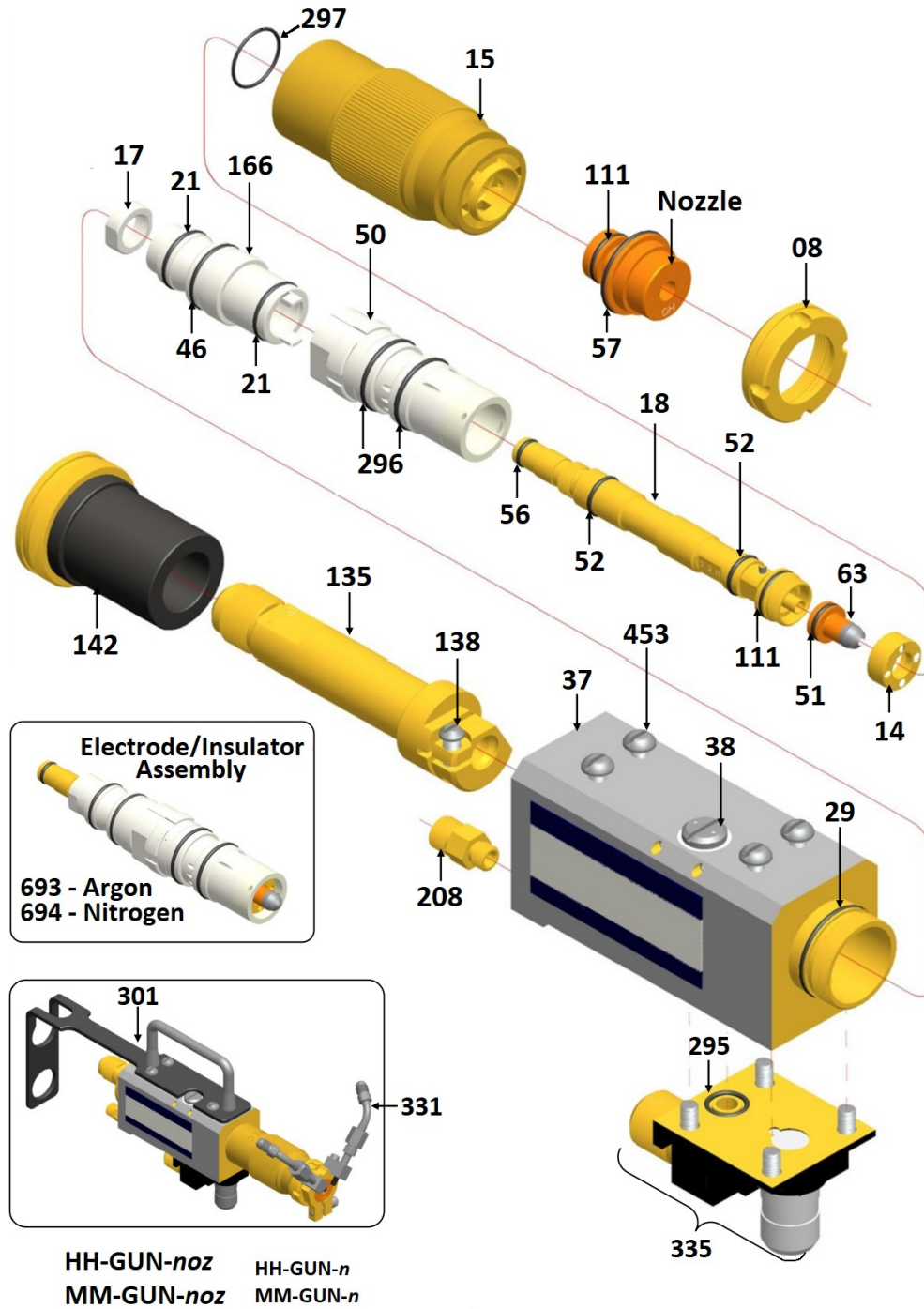


Plasma Powders & Systems, Inc.
3 & 9MB – Spare Parts List

Section 2: 3MB Part List

PGP3-#	OEM #	Description
G	3M7-G-CG	“G” NOZZLE
GE	3M7-GE-	“GE” NOZZLE
GH	3M7-GH-	“GH” NOZZLE
GP	3M7-GP-	“GP” NOZZLE
11	2M11	Electrode
43	4MP71	Handle assembly screw
159	2M183	Hook mounting block
168	4E38	Front body screw
176		Handle assembly screw/hanging
183	2M185	Mounting bracket screw
184	3M184	Electrode Holder
185	3M185	Mounting bracket screw
187	3M57657	Front gun body (Brass)
187Z	3M-187Z	Front gun body (Bronze)
188	3M57653	Rear gun body
189	3M57690	Insulator/Hose assembly
190	2M190	Nozzle locking ring
192	2M192	Rear gun body screw
193	2M193	Lock ring wrench
195	2M195	O-RING Front/Rear gun body cooling water
196	2M196	O-RING Front gun body/Nozzle
197	2M197	O-RING Nozzle, Rear
198	2M198	O-RING Electrode Holder
199	2M199	O-RING Electrode
200		Handle Assembly (hand held)
200-1		Handle Assembly (machine mount)
206	2M206	Re-Seal Kit
268	2M268	Machine mount bracket
269	2M269	Tool Post Stud assembly
275	3M275	Distribution Ring Unijet (Argon)
275N	3MTD4897	Distribution Ring Unijet (Nitrogen)
276	3M276	Electrode Lock Nut (Black)
281	2M281	Silicon Insulating Compound
331	3M331	Swivel connector
GUN-x		Complete gun “x” = Nozzle Selection

Section 3: 9MB Part List - Diagram





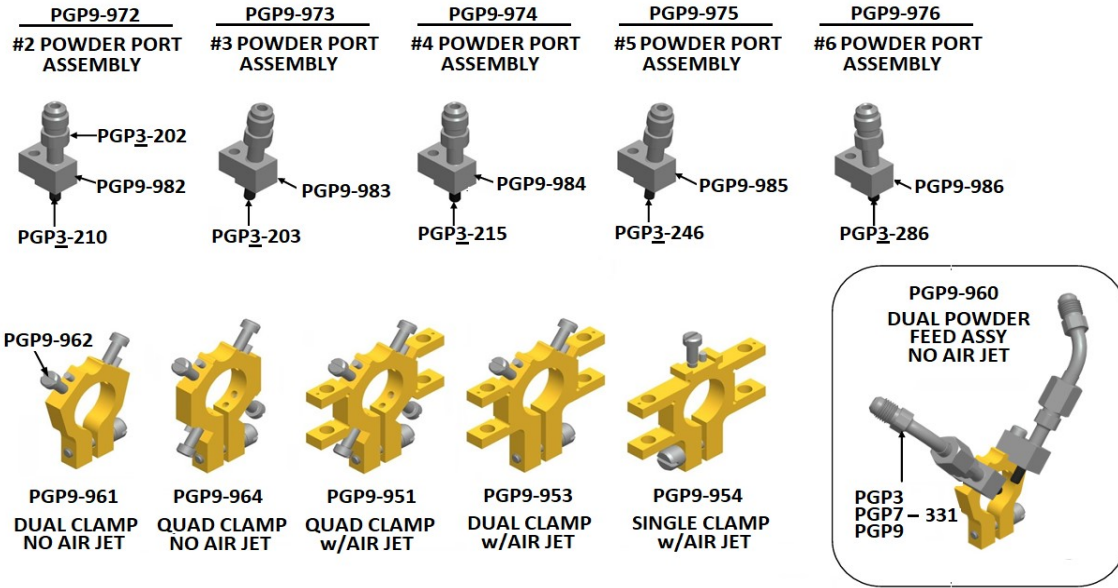
Plasma Powders & Systems, Inc.
3 & 9MB – Spare Parts List

Section 4: 9MB Part List

PGP9-	OEM #	Description	PGP9-	OEM #	Description
G	3M7-G-CG	“G” NOZZLE	221	9MB-221	Lock washer
GE	3M7-GE-CG	“GE” NOZZLE	295	9MB-295	O-RING – Hose Ftg. & Mount stud
GH	3M7-GH-CG	“GH” NOZZLE	296	9MB-296	O-RING – Insulator
GP	3M7-GP-CG	“GP” NOZZLE	297	9MB-297	O-RING – Water Channeling Head
8	9M-8	Nozzle Nut	301	9MB-301	Cable support strap assembly
14	9M-14	Electrode lock nut	331	9MB-331	Swivel connector
15	9M-15	Water chan. Head. w/297	335	9MB-335	Hose ftg. & mounting stud assy.
17	9M-17	Electrode holder nut	453	9MB-453	Screw, Cable support strap
18	9M-18	Electrode holder assembly	693	9MB-293	Electrode/Insulator Assy. Argon
21	9M-21	O-RING – Rear insulator	694	9MB-694	Electrode/Insulator Assy. Nitrogen
29	9M-29	O-RING – Extension base	700	9MB-700	700 Nozzle assembly
37	9M-37	Base assembly	703	9MB-703	703 Nozzle assembly
38	9M-38	Plug screw	704	9MB-704	704 Nozzle assembly
46	9M-46	O-RING – Rear insulator	705	9MB-705	705 Nozzle assembly
49	9M-49	O-RING KIT	706	9MB-706	706 Nozzle assembly
50	9M-50	Front insulator 2-hole Argon	707	9MB-707	707 Nozzle assembly
51	9M-51	O-RING – Electrode	708	9MB-708	708 Nozzle assembly
52	9M-52	O-RING – Electrode holder	732A	9MB-732A	Nozzle assembly
55	9M-55	Front insulator Nitrogen	732B	9MB-732B	Nozzle body
56	9M-56	O-RING – Electrode holder	732C	9MB-732C	Nozzle shell
57	9M-57	O-RING – Nozzle	895	9MB-895	O-Ring
63	9M-63	Electrode	GUN-n		Complete gun w/Nozzle spec.
98	9M-98	Lock ring wrench			
104	9M-104	Electrode nut spanner	10-15	7MH-10-15	Nozzle water cooled Cable 15’
108	9M-108	Electrode puller pliers	20-15	7MH 20-15	Electrode water cooled Cable 15’
109	9M-109	Nozzle nut wrench	20-25	7MH 20-25	Electrode water cooled Cable 25’
111	9M-111	O-RING – Nozzle	50-15	7MH 50-15	Plasma Gas Hose 15’
135	9M-135	Electrode holder clamp/ftg	50-20	7MH 50-20	Plasma Gas Hose 20’
138	9M-138	Clamp screw	50-25	7MH 50-25	Plasma Gas Hose 25’
142	9M-142	Locking ring			
165	9M-165	Machine mount base			
166	9M-166	Rear insulator			
182	9M-182	Valve Lube			
208	9M-208	Hose fitting, Plasma gas			

Section 5: 9MB Clamps/Ports

9MB Type Clamps & Ports



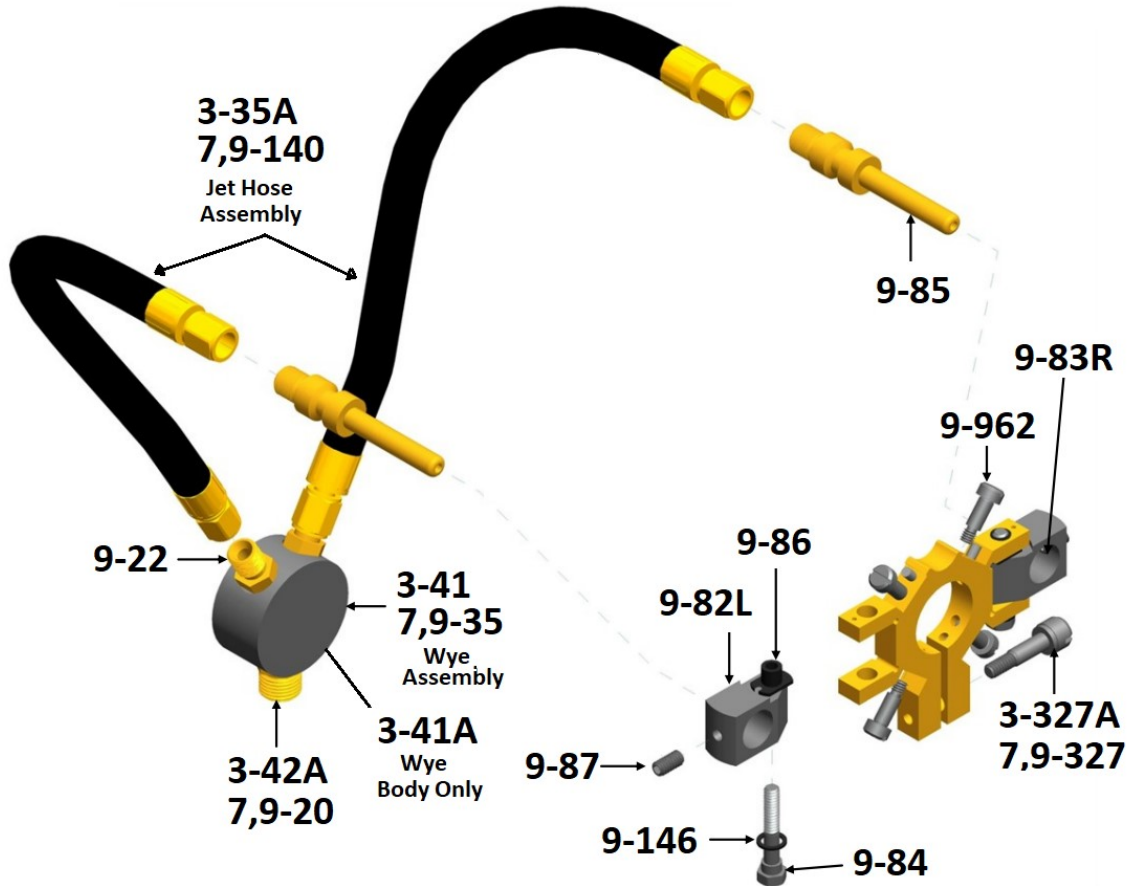
Section 6: 9MB Clamps/Ports Part List

PPS #	OEM #	Description	PPS	OEM #	Description
3-202	3,7,9M-202	Powder Port Stem	9-962	9M-962	Screw, Mounting Block
3-203A	3,7,9M-203	#3 Tip	9-964	9M-964	Quad Pwd. Port Clamp No Air Jet
3-210A	3,7,9M-210	#2 Tip	9-965	9M-965	Quad Pwd. Feed Assy. No Air Jet Inc. Pwd Port Assy. & 331 Swivel
3-215A	3,7,9M-215	#4 Tip	7,9-972	7,9M-972	#2 Powder Port Assembly
3-246A	3,7,9M-246	#5 Tip	7,9-973	7,9M-973	#3 Powder Port Assembly
3-286A	3,7,9M-286	#6 Tip	7,9-974	7,9M-974	#4 Powder Port Assembly
9-950	9M-950	Quad Pwd. Feed Assy. w/Air Jet Inc. Complete air jet assy. No powder port.	7,9-975	7,9M-975	#5 Powder Port Assembly
9-951	9M-951	Quad. Pwd. Port Clamp w/Air Jet	7,9-976	7,9M-976	#6 Powder Port Assembly
9-952	9M-952	Dual Pwd. Feed Assy. w/Air Jet Inc. Complete air jet assy. No powder port.	7,9-982	7,9M-982	#2 Mounting Block
9-953	9M-953	Dual Pwd. Port Clamp w/Air Jet	7,9-983	7,9M-983	#3 Mounting Block
9-954	9M-954	Single Pwd. Port Clamp w/Air Jet	7,9-984	7,9M-984	#4 Mounting Block
9-956	9M-956	Single Pwd. Feed Assy. w/Air Jet Inc. Complete air jet assy. No powder port	7,9-985	7,9M-985	#5 Mounting Block
9-960	9M-960	Dual Pwd. Feed Assy. No Air Jet Inc. Pwd Port Assy & 331 Swivel	7,9-986	7,9M-986	#6 Mounting Block
9-961	9M-961	Dual Pwd. Port Clamp No Air Jet			

Section 7: Air Jet Assembly - Diagram

Air Jet Assembly

9-950 - Complete Assembly



Section 8: Air Jet Assembly – Part List

PPS #	OEM #	Description	PPS #	OEM #	Description
3-5A or 7,9-84	3M-5A	Pivot Block Screw	3,7,9-41A	3M-41A	WYE – Body Only
7,9-22	7M-22	Hose Connector, small	3-41 or 7,9-35	3M-41	WYE – Assembly
3-26L or 7,9-82	3M-26L	Pivot Block LEFT	3,7,9-42	3M-42A	Hose Connector LARGE
3-26R or 7,9-83	3M-26R	Pivot Block RIGHT	3,7,9-43/9-962	3M-43A	Screw, Powder Port Lock
3-26A	3M-26A	Pivot Block SET	3,7,9-86	3M-86A	Nut, Pivot Block Clamp
3-30A or 7,9-85	3M-30A	Jet Air Nozzle	7,9-146	7M-146	Screw, Pivot Block
3-31A or 7,9-87	3M-31A	Jet Set Screw	3,7,9-327	3M-327A	Screw, Locking
3-35 or 7,9-140	3M-35A	Pivot Block Screw			



Plasma Powders & Systems, Inc.
3 & 9MB – Spare Parts List

Section 9: 3MB Part List – Hoses / Cables

Part# (PGP3-)	Description	Part# (PGP3-)	Description
336-15	Plasma gas hose 15 Ft.	395-15	Electrode water cooled Elec cable 15 Ft.
336-20	Plasma gas hose 20 Ft.	395-2	Electrode water cooled Elec cable 20 Ft.
341	Switch	516-15	Powder Hose 15 Ft.
365	Powder hose assembly, 7 Ft.	794	Insulator hose adapter
394-15	Nozzle water cooled Elec cable 15 Ft.	797/7M 21	Left hand adapter (7M console to 3M Cable)
394-20	Nozzle water cooled Elec cable 20 Ft.	798/7M 11	Right hand adapter (7M console to 3M Cable)

This publication could include technical inaccuracies or typographical errors. Changes may be made to the information herein. These changes will be incorporated in later editions of the manual. Persons and organizations that may already possess the equipment and or a copy of this manual are responsible to request periodic updates of this document in writing from Plasma Powders & Systems, Inc. at the address indicated below.

Plasma Powders & Systems Inc.
38 Adamson Street
Easton, PA 18042
732-431-0992

Email – info@plasmapowders.com

Web – www.plasmapowders.com